

GAUGE ISOLATOR VALVE

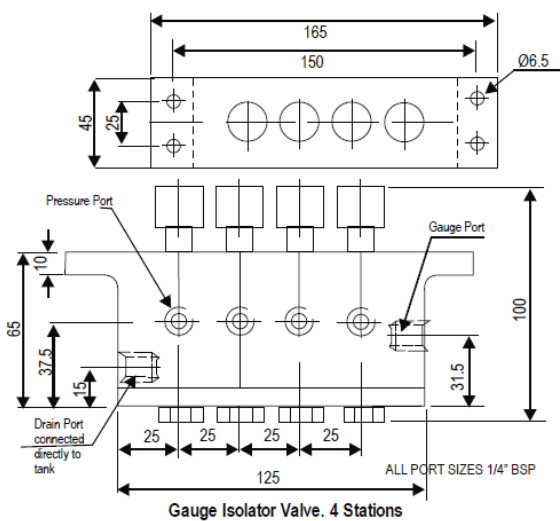
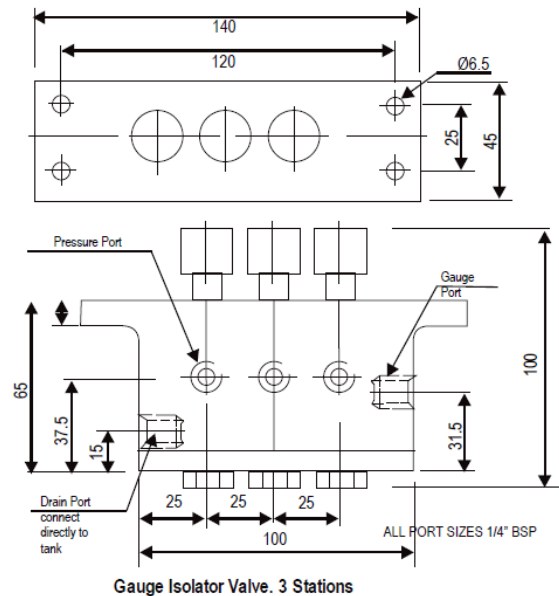
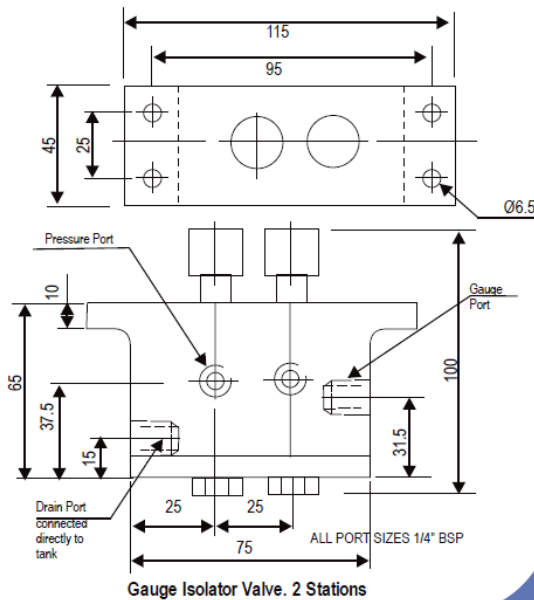
(MODEL: GI MS PR 2/3/4)

MULTI STATION

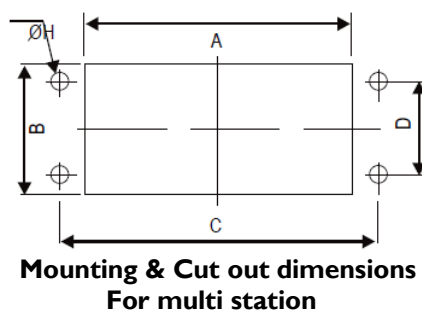
TECHNICAL DATA

HYDAX Introduces for the first time ever 2, 3, 4, 5 and 6 stations single block valves. Outer body is made of High Grade Casting. The valves are designed to prevent surge damage to a gauge in all types of hydraulic circuits. The spring returned facility is the same as in the single station valve. The high performance, low drain leakage characteristic is maintained in the multi-station valves. Only one gauge and one drain line for

all the ports reduces plumbing and additional instrumentation cost. The maximum working pressure is about 3000 PSI. Working pressure ranges from -30° F to 240° F. All ports are 1/4" BSP and can be easily mounted on panels. All plumbing is from the rear.



MODEL GI MS PR



Sl. No.	Model No.	Dimensions				
		A	B	C	D	ϕH
1	GI MS PR-2	84	45	95	25	6.5
2	GI MS PR-3	106	45	120	25	6.5
3	GI MS PR-4	136	45	150	25	6.5